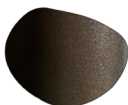


SLATE SHORT INTERIOR CERAMIC WALL LIGHT

Proudly Handmade in Tasmania

PRODUCT CODE	WP_SLA_S_GU10
DIMENSIONS (mm)	120W x 100D x 180H +/- 5mm
WEIGHT (kg)	2.0
CLAY TYPE	Smooth
GLAZE FINISH	Shimmered Slate



LIGHT DIRECTION Globe direction down, emits soft upwards glow.

LIGHT SOURCE GU10 240V, LED, dimmable, 5-10W, globe not included.

IP RATING IP20- For indoor use only, please refer to Wet Area IP Zone Diagram for bathroom installation locations.

MOUNTING PLATE FINISH White powder coated aluminium, protected against corrosion.

WARRANTY 3 year structural warranty, for more information please refer to website.

We Ponder

