

W500.SXIP Curve Surface-Mounted LED Wall Light

Datasheet

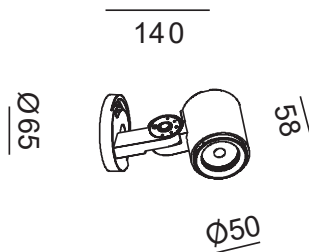


Product Codes

Unit	Series	Colour Temp.:	Beam Angle (°)	Colour:	Input Voltage:
W500.SXIP	CR	3K (3000K) 4K (4000K) 2.7K (2700K)	15, 21, 30	W (White) B (Black) SG (Stone Grey) GM (Gun Metal)	24V 240V

Dimensions (mm)

Product Dimensions



Electrical

Input Voltage	Power Usage	LED:	Current
DC 24V AC 240V	5W	1X4.8W	500mA

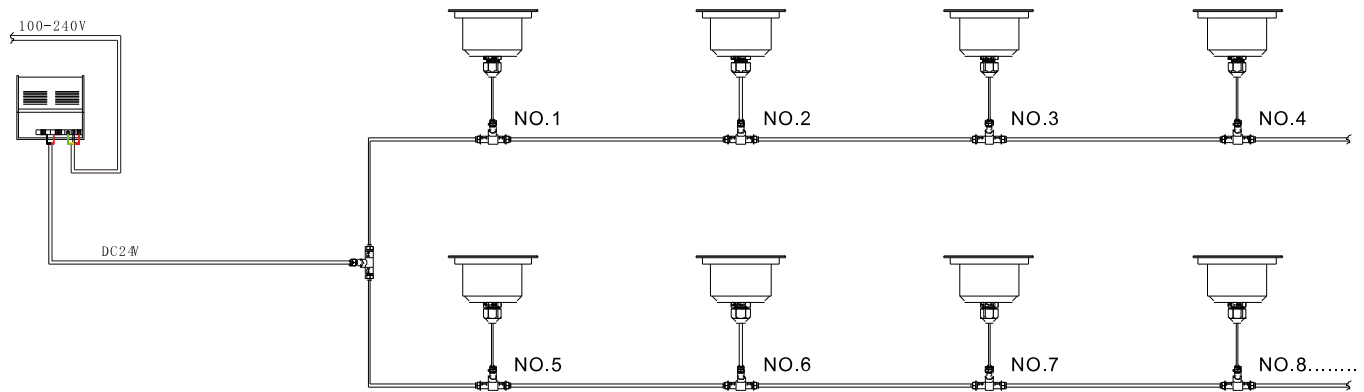
Operational

CRI Value	Lumen Output:	Warranty:
CRI90	3K: 499lm 4K: 509lm 2.7K: 489lm	10 Years

Physical

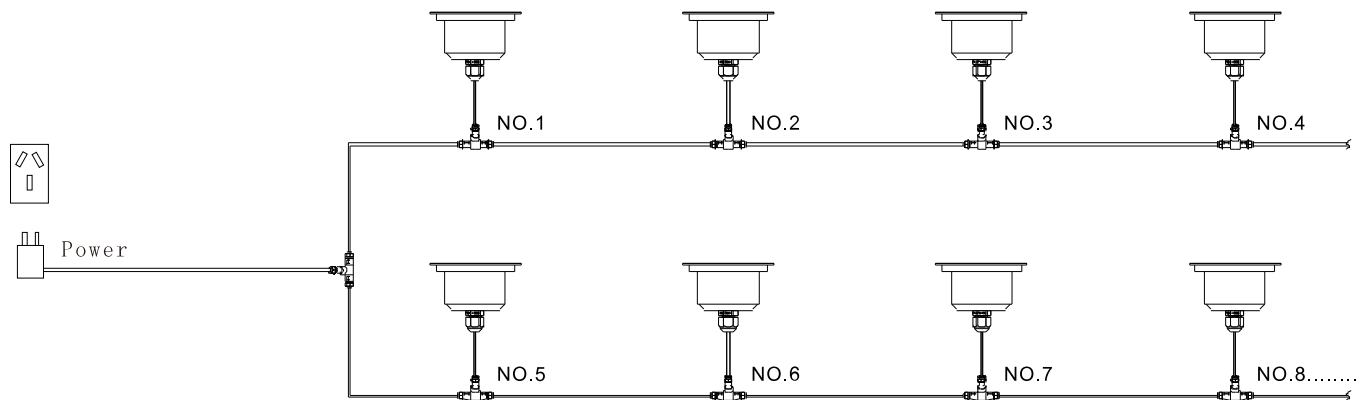
Adjustable Aangle (°)	IP Rating:	IK Rating:	Materials
BASE: +45/-45 HORIZONTAL: +60/-120	IP65	IK06	Aluminum Glass

DC 24V WIRING



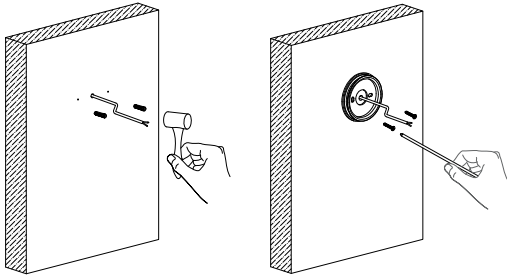
Lamps overall power depends on the main power supply (can not exceed 80% of main power supply)

AC 240V WIRING



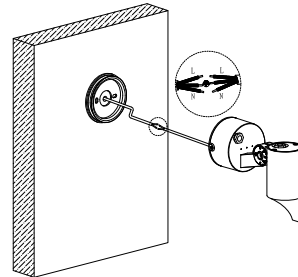
Step 1

Thread the power cable through the base plate. Use the base plate as a guide to drill 2 pilot holes for the wall plugs. Once wall plugs have been pressed into the wall, fasten the base plate to the wall using the screws provided.



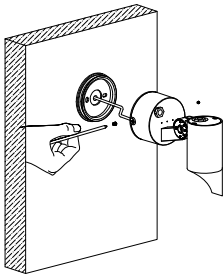
Step 2

Connect the power cables as shown. Leave enough cable length so that the brackets can swing easily.



Step 3

Fix the light to the base using screws.



Step 4

Orient the light as desired.

