

G400.XIP Curve Recessed In-Ground LED Luminaire

Datasheet

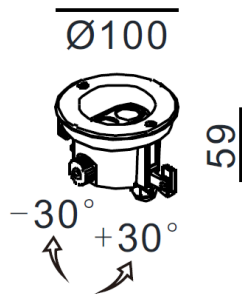


Product Codes

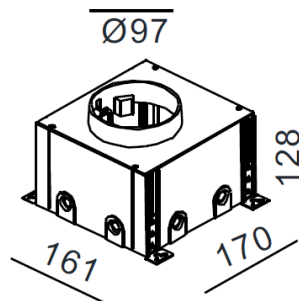
Unit	Series	Colour Temp.:	Beam Angle (°)	Colour:	Input Voltage:
G400.XIP	CR	3K (3000K) 4K (4000K) 2.7K (2700K)	6, 13, 20, 30, 40 OR 10X35, 20X40	SS (316 Stainless Steel)	24V 240V

Dimensions (mm)

Product Dimensions



Optional Mounting Box dimensions | Code: IP-004-WBX



Electrical

Input Voltage	Power Usage	LED:	Current
DC 24V AC 240V	4W	2X2.1W	700mA

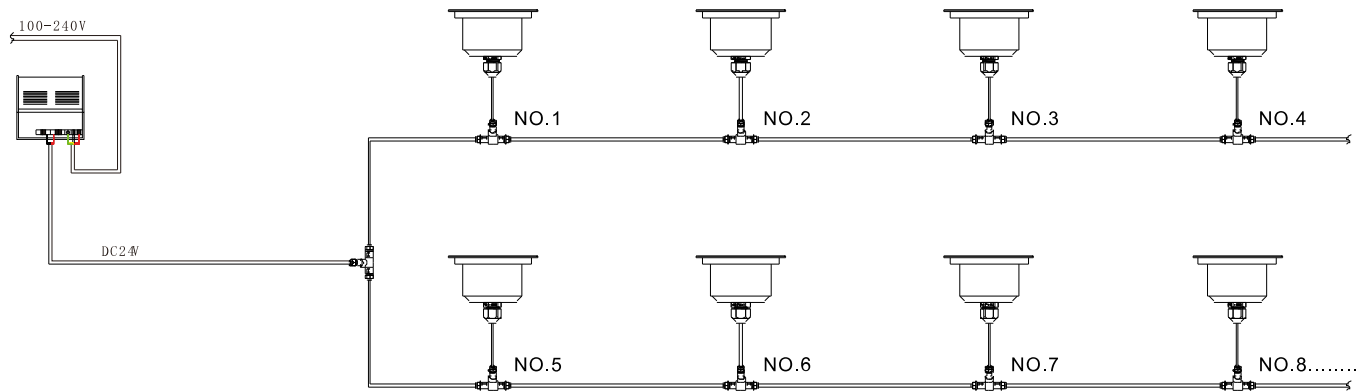
Operational

CRI Value	Lumen Output:	Warranty:
CRI90	3K: 399lm 4K: 407lm 2.7K: 391lm	10 Years

Physical

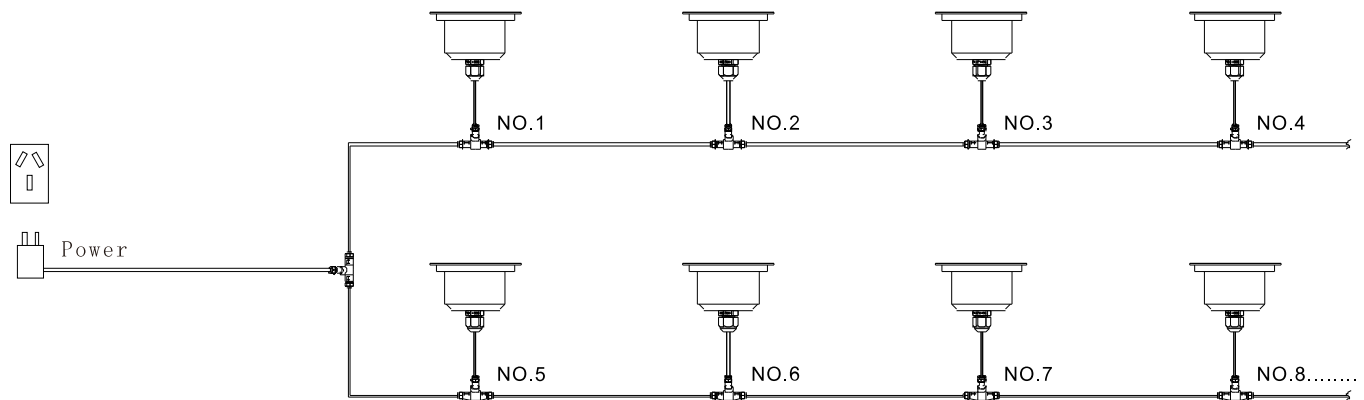
Adjustable Aangle (°)	IP Rating:	IK Rating:	Materials
HORIZONTAL: +-30	IP67	IK09	Stainless Steel Aluminum Glass

DC 24V WIRING



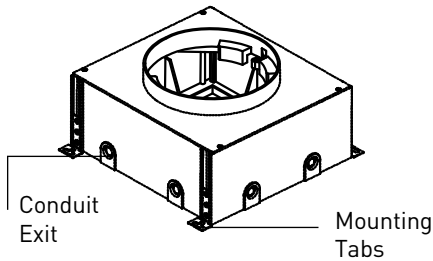
Lamps overall power depends on the main power supply (can not exceed 80% of main power supply)

AC 240V WIRING



Installation

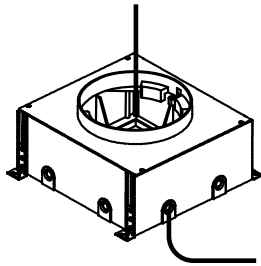
- 1 On the Multi Mounting Box, remove the cable conduit exits to be used.



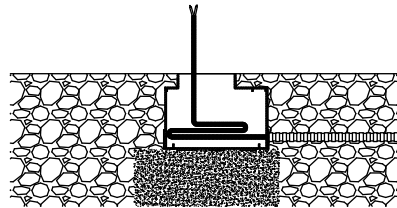
Note:

1. There are 13 conduit exits. Two on each side and five on the bottom.
2. It also has 4 slidable mounting tabs to help affix the box at the desired height.

- 2 Thread the cable through the conduit opening into the Multi Mounting Box. Ensure the cable length can exit the multi mounting box for ease of serviceability.



- 3 Insert the Multi Mounting Box into the ground. Ensure that it is level with the ground and fix with gravel/concrete.



- 4 Connect the light to the cable and insert light into the Multi Mounting Box. Align the light's mounting screw to the red screw hole in the mounting box.

